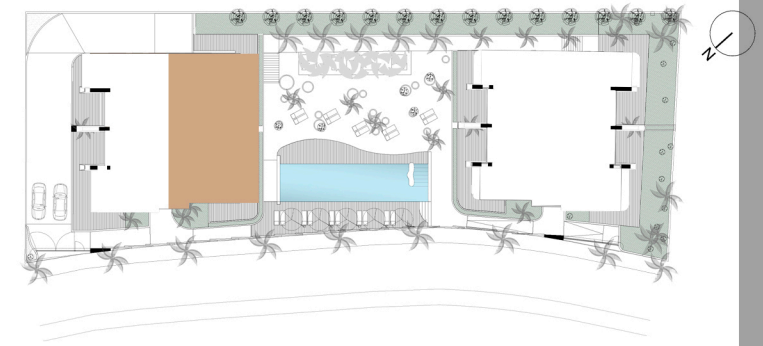


BUILDING A DUPLEX PENTHOUSE B



BUILDING A

DUPLEX PENTHOUSE APARTMENT B

LIVING ROOM-KITCHEN	41.56 m2
HALL	12.30 m2
TOILET	4.60 m2
BEDROOM 1	18.20 m2
IN SUITE BATHROOM 1	7.49 m2
BEDROOM 2	22.70 m2
IN SUITE BATHROOM 2	9.45 m2
BEDROOM 3	21.10 m2
IN SUITE BATHROOM 3	9.15 m2

TOTAL OF SURFACE OF USABLE AREA	146.55 m2
TOTAL OF CONSTRUCTED AREA	171.12 m2

Surface of Communal Area 37.92 m2

TOTAL OF COSTRUCTED AND COMMUNAL AREA	209.04 m2 (1)
---------------------------------------	---------------

Surface of Terrace-Sun Area 93.42 m2 (2)

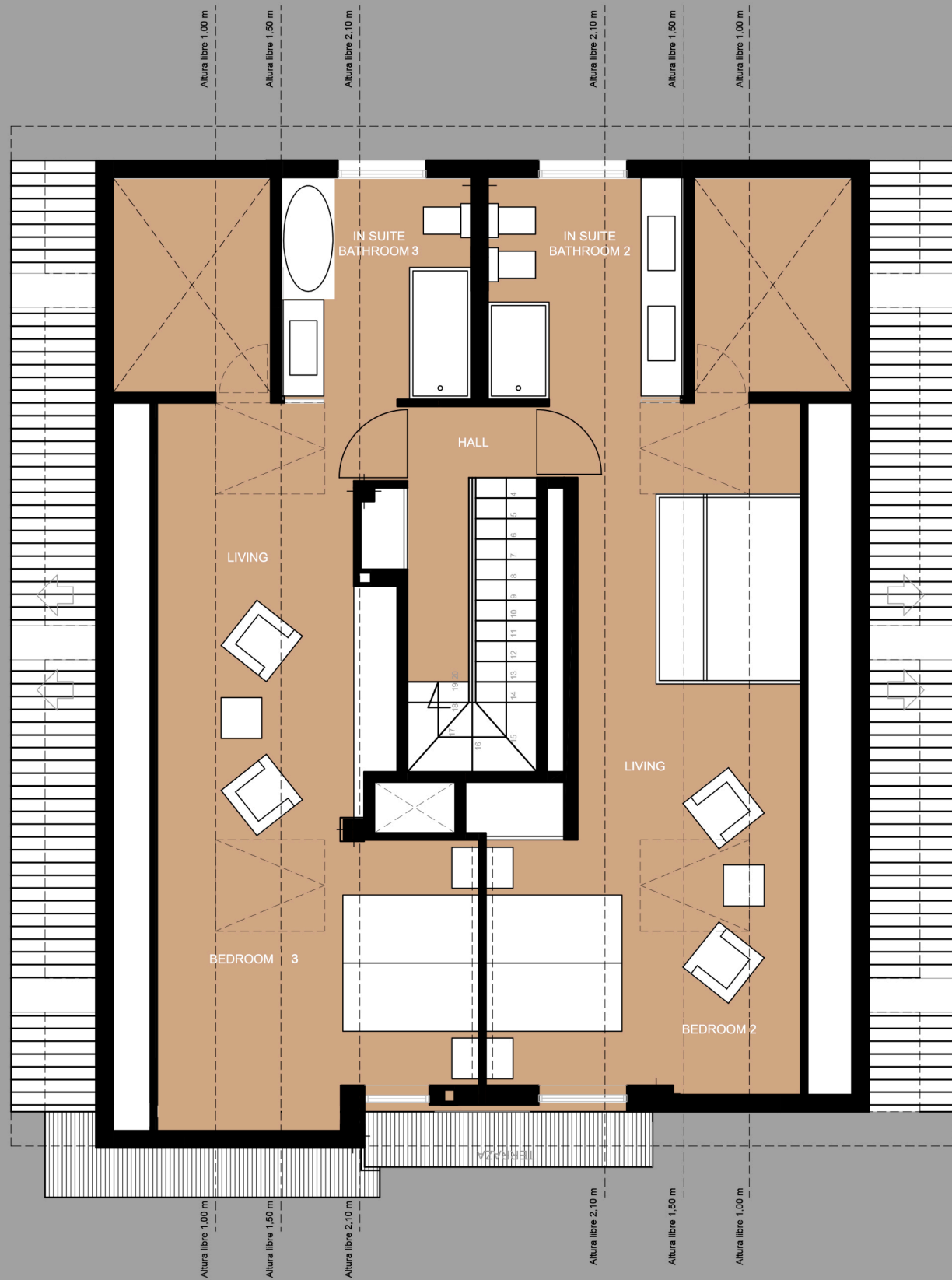
Private Garden 00.00 m2 (3)

TOTAL SURFACE OF APARTAMENT (1+2+3)	302.46 m2
--	------------------

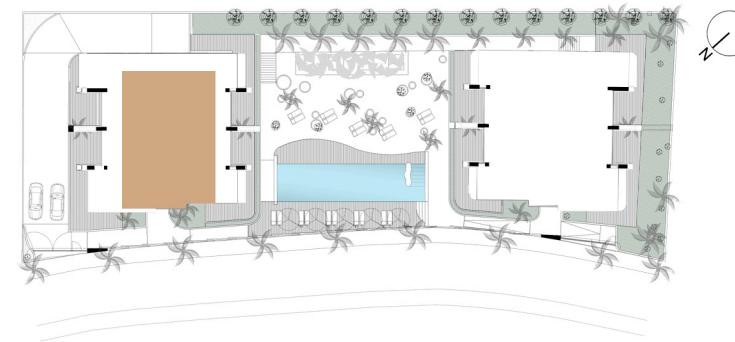


DUNES BEACH
MARBELLA

PROJECT OF 30 APARTMENTS IN CABOPINO
DEVELOPER: DUNES BEACH INVEST S.L.



BUILDING A DUPLEX PENTHOUSE B



BUILDING A	DUPLEX PENTHOUSE
	APARTMENT B

LIVING ROOM-KITCHEN	41.56 m ²
HALL	12.30 m ²
TOILET	4.60 m ²
BEDROOM 1	18.20 m ²
IN SUITE BATHROOM 1	7.49 m ²
BEDROOM 2	22.70 m ²
IN SUITE BATHROOM 2	9.45 m ²
BEDROOM 3	21.10 m ²
IN SUITE BATHROOM 3	9.15 m ²

TOTAL OF SURFACE OF USABLE AREA	146.55 m ²
TOTAL OF CONSTRUCTED AREA	171.12 m ²
Surface of Communal Area	37.92 m ²
TOTAL OF COSTRUCTED AND COMMUNAL AREA	209.04 m ² (1)
Surface of Terrace-Sun Area	93.42 m² (2)
Private Garden	00.00 m ² (3)

TOTAL SURFACE OF APARTAMENT (1+2+3)	302.46 m²
--	-----------------------------



DUNES BEACH
 MARBELLA

PROJECT OF 30 APARTMENTS IN CABOPINO
 DEVELOPER: DUNES BEACH INVEST S.L.